



presents the

2011 Michigan State



DMC

Huron Valley-Sinai Hospital



RACE BIBLE

July 31, 2011

\$6,000 Cash and Prize Purse

Sponsored by:



TABLE OF CONTENTS

Letter from the Race Director	3
Registration	4
Schedule	4
Purse Payouts	5
Rules	6
Number Placement	7
Directions	10
Accommodations	11
Course Map	12



Huron Valley
Athletic Club
P.O. Box 174
Milford, MI 48381
www.milfordcrit.org



July 31, 2011

As Race Director of the third annual DMC-Huron Valley Sinai Hospital / Milford Criterium, I would like to welcome you to our event. The DMC, the Village of Milford and our sponsors greatly appreciate your participation!

Our 0.92 mile Criterium course will start and finish on Main Street in the heart of historic downtown Milford (see map below). Building on the success of last two years, we are expecting a large and enthusiastic crowd to be on hand to cheer you on. In addition, we are excited that the Milford Criterium has been chosen to host the Michigan State Criterium Championships.

We are also extremely pleased that Brad Sohner is once again the announcer for the 2011 Milford Criterium. Brad has been announcing professionally for nearly ten years, working all around the country specializing in road and crit racing. Each year, he works events of all sizes, from small, local crits to larger scale events like the Tour of California, and everything in between. Brad's philosophy is to "bring cycling to the masses," with lots of emphasis on explaining racing tactics and the sport itself, while making the announcing and commentary interesting to veterans and strangers to cycling alike. Brad will bring a unique and entertaining facet to the entire event.

Our Kids Race drew over eighty participants and was quite competitive. It was a special treat to see the up and coming racers of tomorrow being led out by professional racer Morgan Schmitt of the United Health Care cycling team. Please encourage these youngsters and help inspire them to keep active and healthy. There will be many activities occurring in Central Park all day including the Michigan Mountain Biking Associations Mountain Kids program, which introduces kids to mountain biking. Saturday evening there will be live entertainment and roller races provided by Milford House and, of course, all that downtown Milford's shops and restaurants have to offer along the race course. Milford has a new bike path that connects to Kensington Metropark and Milford is also close to great mountain biking trails, so bring your friends and family. There will be something there for everyone!

The Huron Valley Athletic Club is a non-profit organization for area outdoor athletes of all skill levels and abilities. HVAC's goal is to promote outdoor athletics as part of a healthy lifestyle. By promoting events like this race, we hope that it will encourage participation from both young and old, not only in cycling but all forms of healthy outdoor activities.

Please be sure to thank our volunteers, who are giving of their own time to make your race possible. Please also take a moment to visit our sponsors. Without our volunteers and sponsors, our race could not take place. We ask that all participants follow the rules and directions of the race officials, promoters and volunteers.

Thanks again for your support and have a safe and fun race!

Joe Dolan
Race Director

Registration:

- ⌚ Pre-registration is available online through USA Cycling at:
<https://www.usacycling.org>
 (Note: Online Registration will close on 7/28/2011 at 11:59 PM EST!)
- ⌚ Race day registration starts at 7:00am and closes **30 minutes** prior to the start of each event.
- ⌚ There will be a \$10.00 late fee per event for day of race registration.
- ⌚ You **must** present a valid USAC license to pickup race packet.
- ⌚ One-day license will be available for \$10.00 per day for Cat.5 Men, Cat. 4 Women and Juniors.

Schedule:

CLASS	CATEGORY	START TIME	LENGTH	AWARDS	PRE-REG.	DAY OF REG.
Junior Girls	14 & Under	8:00 am	20 min + 1 laps	Prizes / Top 3	\$5	\$15
Junior Boys	14 & Under	8:00 am	20 min + 1 laps	Prizes / Top 3	\$5	\$15
Junior Girls	15 - 18	8:30 am	20 min + 1 laps	Prizes / Top 3	\$5	\$15
Junior Boys	15 - 18	8:30 am	20 min + 1 laps	Prizes / Top 3	\$5	\$15
Men	Cat. 5	9:00 am	30 min + 2 laps	Prizes / Top 5	\$30	\$40
Masters Men 45+ / 55+**	Cat. 1 - 4	9:50 am	45 min + 2 laps	\$325 / Top 5	\$30	\$40
Women	Cat. 4	11:00 am	30 min + 2 laps	\$125 / Top 3	\$25	\$35
Elite Women	Cat. 1 - 3	12:00 pm	45 min + 2 laps	\$1,400 / Top 12	\$30	\$40
Masters Men 35+	Cat. 1 - 4	1:15 pm	45 min + 2 laps	\$325 / Top 5	\$30	\$40
Kid's Fun Race		2:15 pm	30 min	Prizes	Free	Free
Elite Men	Cat. 3	2:45 pm	40 min + 2 laps	\$355 / Top 5	\$30	\$40
Elite Men	Cat. 4	3:35 pm	35 min + 2 laps	\$275 / Top 5	\$30	\$40
Elite Men	Pro/Cat.1-2	4:15 pm	60 min + 2 laps	\$2,500 / Top 20	\$35	\$45

2010 Milford Criterium
 Total Cash Purse (not including primes and prizes)

Elite Men Pro / Cat. 1 – 2
 Total Purse \$2,500

Place	Prize
1	680
2	355
3	235
4	175
5	140
6	115
7	100
8	85
9	80
10	70
11	65
12	60
13	55
14	48
15	45
16	43
17	40
18	38
19	36
20	35

Elite Men Cat. 3
 Total Purse \$355

Place	Prize
1	125
2	80
3	60
4	50
5	40

Elite Men Cat. 4
 Total Purse \$275

Place	Prize
1	100
2	75
3	50
4	30
5	20

Elite Women Cat. 4
 Total Purse \$125

Place	Prize
1	60
2	40
3	25

Masters Men 35+ Cat. 1 - 4
 Total Purse \$325

Place	Prize
1	100
2	75
3	60
4	50
5	40

Masters Men 45+ Cat. 1 - 4
 Total Purse \$325

Place	Prize
1	100
2	75
3	60
4	50
5	40

Masters Men 55+ Cat. 1 - 4
 Total Purse \$325

Place	Prize
1	100
2	75
3	60
4	50
5	40

Elite Women Cat. 1 – 3
 Total Purse \$1,400

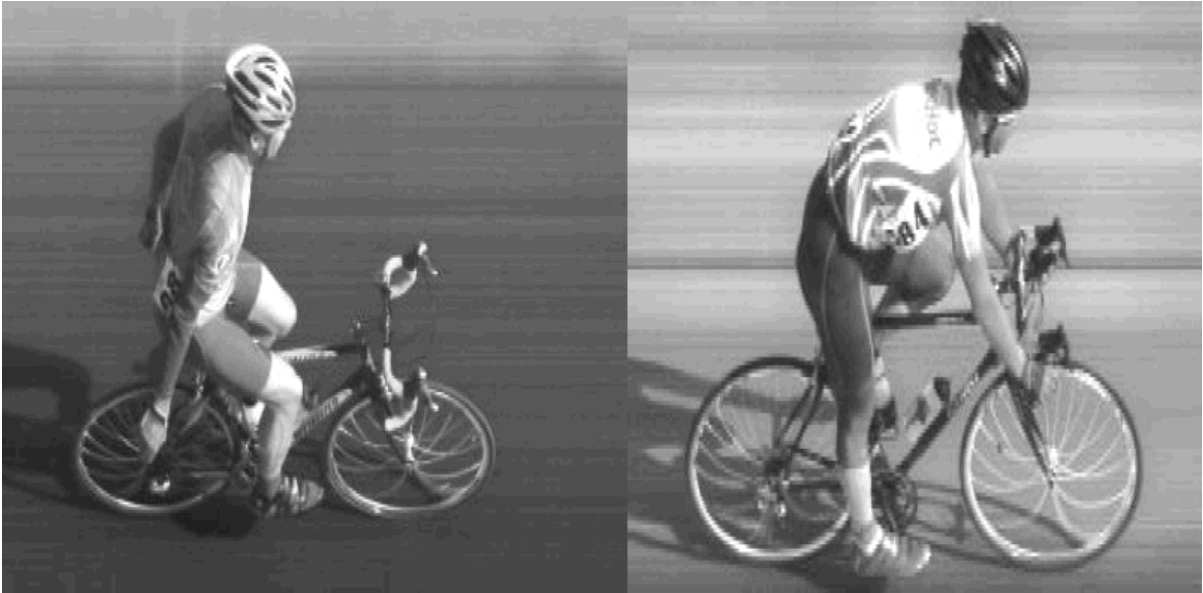
Place	Prize
1	395
2	225
3	175
4	125
5	85
6	75
7	60
8	50
9	45
10	40
11	35
12	32
13	30
14	28

GENERAL RULES:

- Ⓟ All 2009 USAC rules are in effect.
- Ⓟ Held under USA Cycling permit # 2011 – 1919
- Ⓟ Valid and current USAC license must be presented at registration.
- Ⓟ Registration closes **30 minutes** prior to start of each event.
- Ⓟ Promoter reserves the right to adjust start time/mileage, cancel/combine events, remove riders from events, and modify prize lists as necessary.
- Ⓟ Events held rain or shine.
- Ⓟ Helmets **MUST** be worn while on the bike at all times, except while on a stationary trainer.
- Ⓟ Field limit for Cat. 5 racers is 50 riders, all other fields are 100 riders.
- Ⓟ Cat. 5 level racers are not allowed to participate in the Masters races.
- Ⓟ All numbers supplied by the promoter must be used. If racing in different categories, then use the assigned number for that category.
- Ⓟ No folding or cutting of numbers is allowed.
- Ⓟ Position numbers on the correct side of the jersey with the bottom edge of each number aligned with the jersey side seam. The promoter is not responsible for scoring problems due to incorrect number placement.
- Ⓟ Number placement: **RIGHT SIDE**
- Ⓟ All events will have officials on the race course at the finish line.
- Ⓟ Please dispose of your trash properly. Littering, whether on or off the bike, will not be tolerated. Our ability to hold future races is dependent on everyone following this rule, racers and non-racers alike.
- Ⓟ **Please, ABSOLUTELY no public urination!** The continuation of this event depends on all participants following public decency standards. The local police will enforce all public decency laws! Portable toilets will be provided.
- Ⓟ **Payouts will be made after official results are final.** You must present the paymaster your USAC license or race number to claim your prize money. Unclaimed prize money will be mailed to you provided we have a legible name and address on file. A \$2.00 fee will be deducted from the amount of the prize for postage and handling.
- Ⓟ One-day licenses available for Cat 5 men, Cat 4 women and Juniors (\$10.00 for one-day license).
- Ⓟ Please exercise common sense, caution, and courtesy. We want to continue to provide Milford as a host venue for future races.

Number Placement

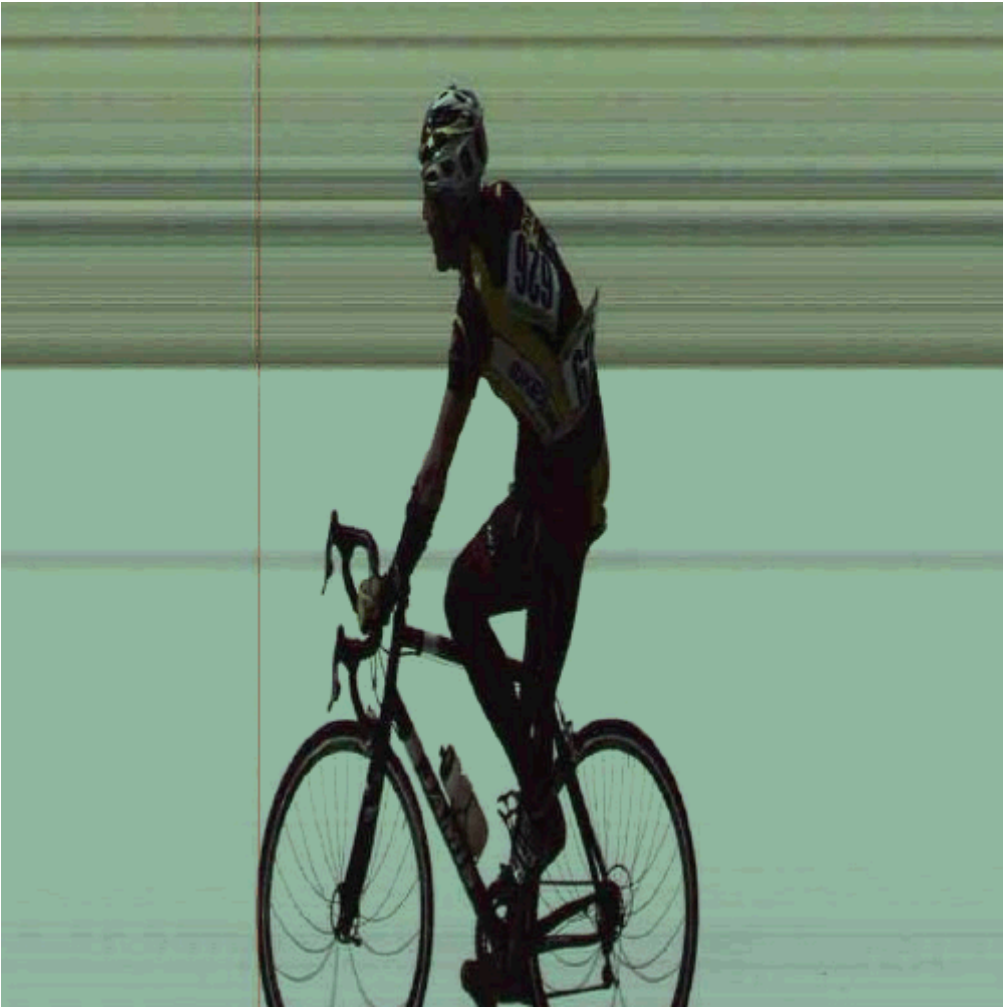
Examples of poor number placement:



Sitting up at the line makes reading numbers difficult, and may result in additional penalties (e.g. DQ). Numbers must be visible during the entire race.



Numbers must be positioned right side up, not upside down as shown here:

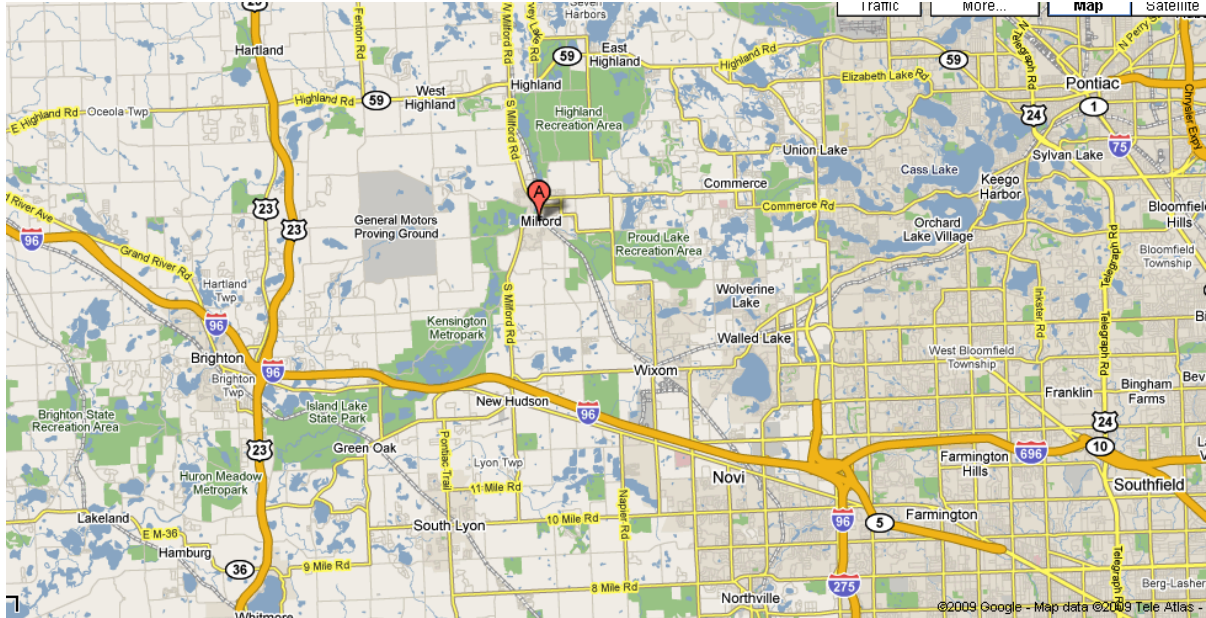


Examples of proper bib number placement:

Proper bib number placement is essential for the officials and results team to produce accurate results. Remember if the officials and results team are unable to read your bib number, you will not get a placing in the event.



Directions to Milford:



DIRECTIONS:

From the East

Take I96 to Milford Exit

Turn Right (North) on Milford Rd. and follow it until it ends at GM Rd

Turn Right (East) on General Motors Road/Huron

Turn Left (North) on Main Street

From the West

Take I96 to Milford Exit

Turn Left (North) on Milford Rd. and follow it until it ends at GM Rd

Turn Right (East) on General Motors Road/Huron

Turn Left (North) on Main Street

From M59

Go South on Milford Road approximately 3 miles

Accommodations:

Our recommended accommodations, Comfort Suites, Wixom, just minutes from downtown Milford, has offered a rate of \$69 (plus tax) for spectators and for amateurs & pro teams racing in the Inaugural Milford Criterium. Limited number of rooms blocked, so reserve now!



Limited Host Families for cyclists are available. Through the generosity and hospitality of local families who appreciate cycling, host families will welcome racers as guests in their homes. Riders are provided with a place to sleep, access to a shower, a garage or other enclosed space to store their bicycles. If you are interested or have any questions, send an email to info@milfordcrit.org

Criterion Course Layout:

The 0.92 mile course starts and finishes on Main Street in downtown Milford. The riders will proceed north on Main Street and head west of Commerce Road passing underneath the train tracks, turning left onto Cabinet Street, left onto Liberty and then proceeding right at Central Park. The riders will then make another left turn back onto Main Street passing under the train tracks once again with a slight up hill sprint to the finish.

